



Slide Switches

Series JS-999

Metal & Plastic Housing

"Since 1975 . . . serving the automotive industry and over 2,000 OEM customers"

JS-999 (2 position)

Specifications

- SPST (Single Pole, Single Throw)
- SPDT (Single Pole, Double Throw)
- DPDT (Double Pole, Double Throw)

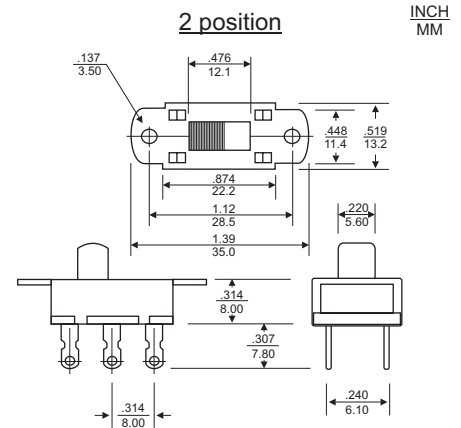
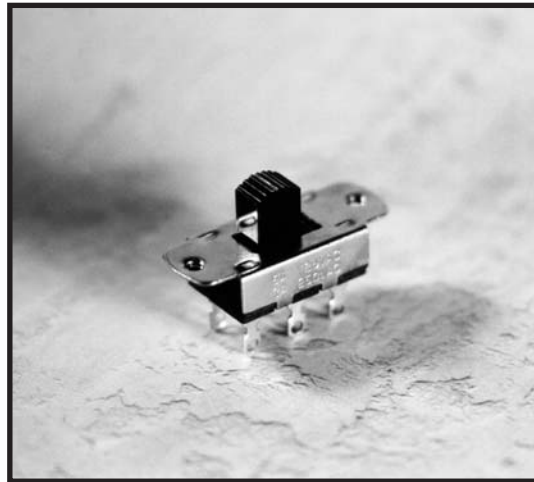
Rating: 125V AC 6A
250V AC 3A

Function: 1 to 2 poles, with 2 positions

Button design: 7 varieties of buttons available

Terminals: Numerous PCB mount and other styles available

UL & CSA Recognized



Dimensions given for approximate size only. Contact factory for specific applications and panel hole sizes.

JS-999 (3 position)

Specifications

- SP3T (Single Pole, 3 Throw)
- DP3T (Double Pole, 3 Throw)

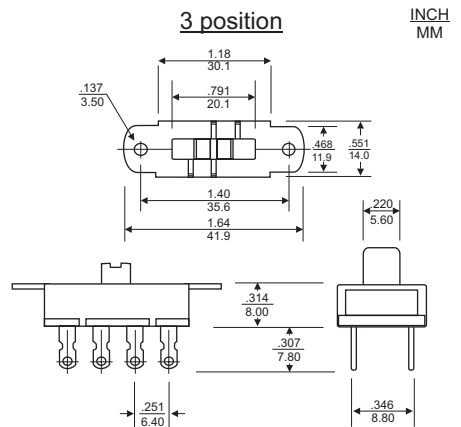
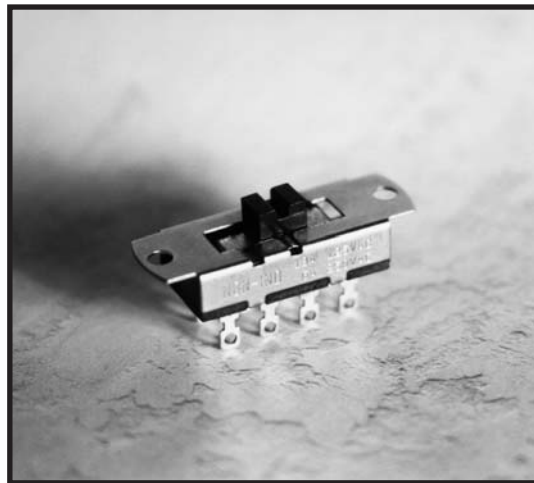
Rating: 125V AC 6A
250V AC 3A

Function: 1 to 2 poles, with 3 positions

Button design: 7 varieties of buttons available

Terminals: Numerous PCB mount and other styles available

UL & CSA Recognized



Dimensions given for approximate size only. Contact factory for specific applications and panel hole sizes.

JS-999 (4 position)

Specifications

- SP4T (Single Pole, 4 Throw)
- DP4T (Single Pole, 4 Throw)

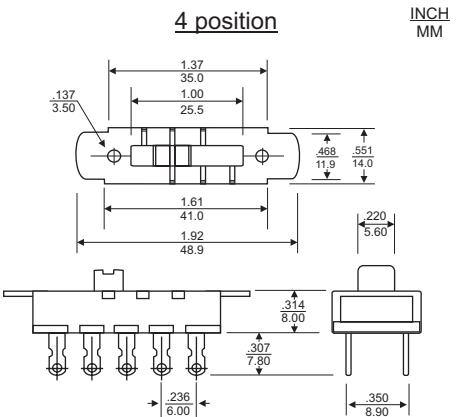
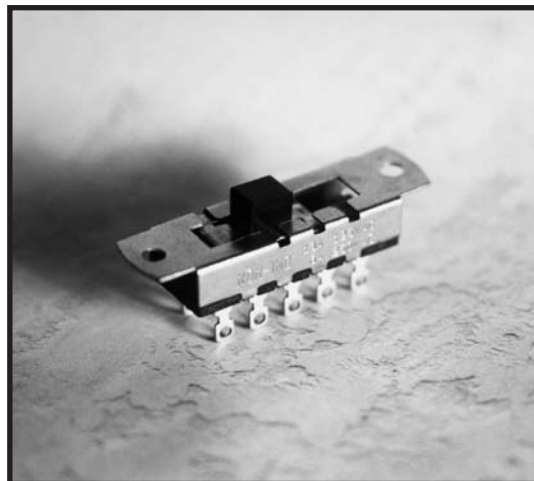
Rating: 125V AC 6A
250V AC 3A

Function: 1 to 2 poles, with 4 positions

Button design: 7 varieties of buttons available

Terminals: Numerous PCB mount and other styles available

UL & CSA Recognized



Dimensions given for approximate size only. Contact factory for specific applications and panel hole sizes.